

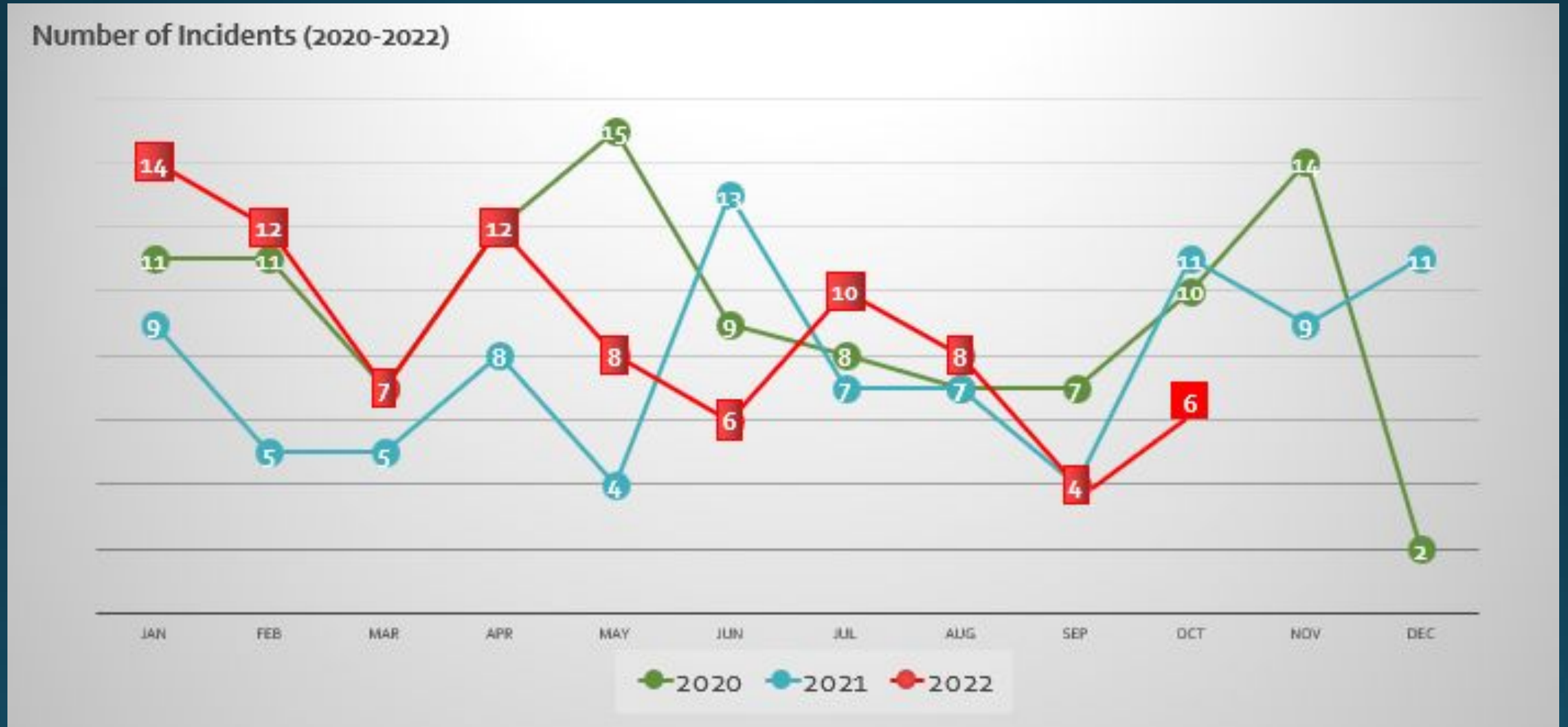


42nd Shared Awareness Meeting

1. IFC AOI MARSEC UPDATE ON THEFT, ROBBERY AND PIRACY AT SEA (TRAPS)
2. BRIEF ON IRREGULAR HUMAN MIGRATION (IHM) SITUATION IN IFC AOI

LCDR Timothy Laird, Australia International Liaison Officer, IFC

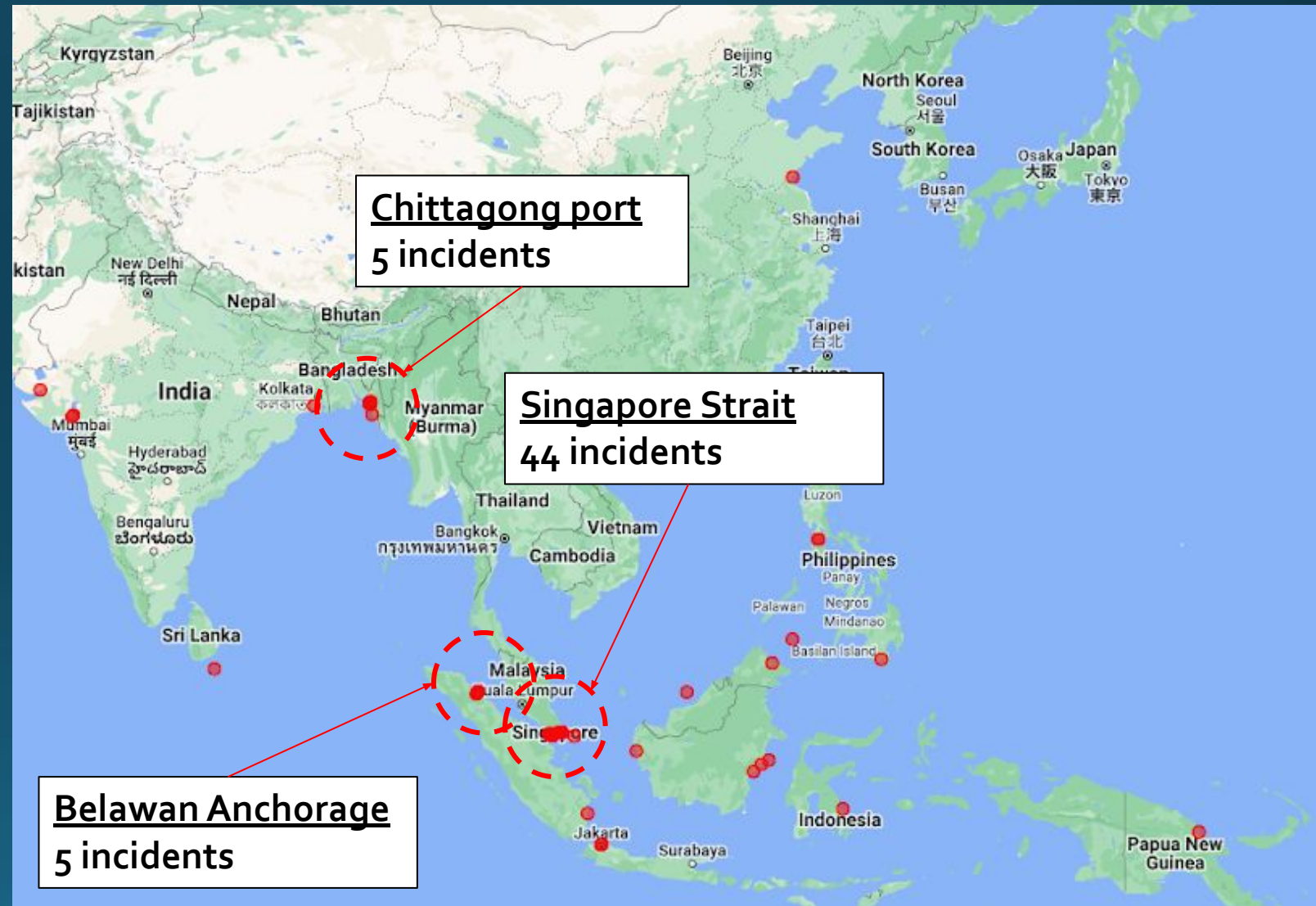
MARSEC Situation in IFC Area of Interest (AOI)



Number of TRAPS incidents in the AOI for the last 3 years

MARSEC Situation in IFC Area of Interest (AOI)

- 87 Incidents (as at end Oct)
- Two minor injuries from Sea Robbery incidents off Spratly Island and off West Kalimantan
- 28 incidents where weapons were reported,
 - Half involved knives or machetes
 - 4 involved firearms (3 sightings / 1 caused injury)
- 26 incidents while the ship was berthed or anchored. Generally at night
- 70% of incidents involved large merchant vessels (container ships/ tankers/ bulkers)



MARSEC situation in Singapore Strait

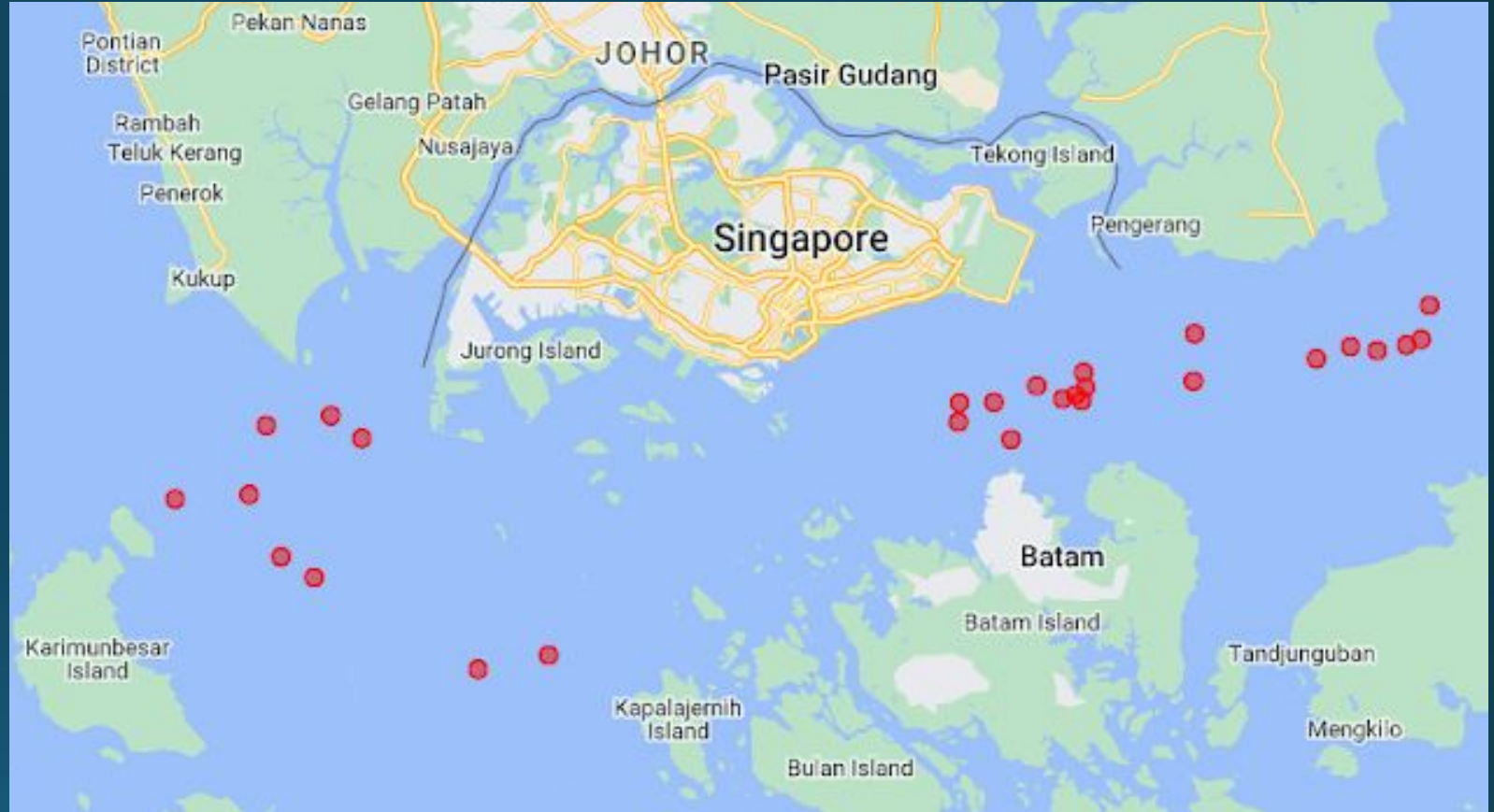
44 Incidents in the Singapore Strait from Jan to Oct 2022

Small groups

- Up to 6 people on a small boat, board multiple vessels in a night
- Armed with tools for forcing access, and not to injure crew

Petty theft

- 10 tug and barges boarded, generally to steal scrap metal from the barge
- 34 tankers and bulk carriers boarded, for spare parts and other small items



IFC Ops Success



On 3 Nov 22, the Indonesian Navy and Batam Polairud (Marine Police) arrested 7 perpetrators that had boarded a barge to steal scrap metal, while vessel was transiting along SS.

Importance of Reporting

- Allows authorities to:
 - Gain overall visibility on actual MARSEC situation
 - Analyse trends
 - Formulate necessary actions



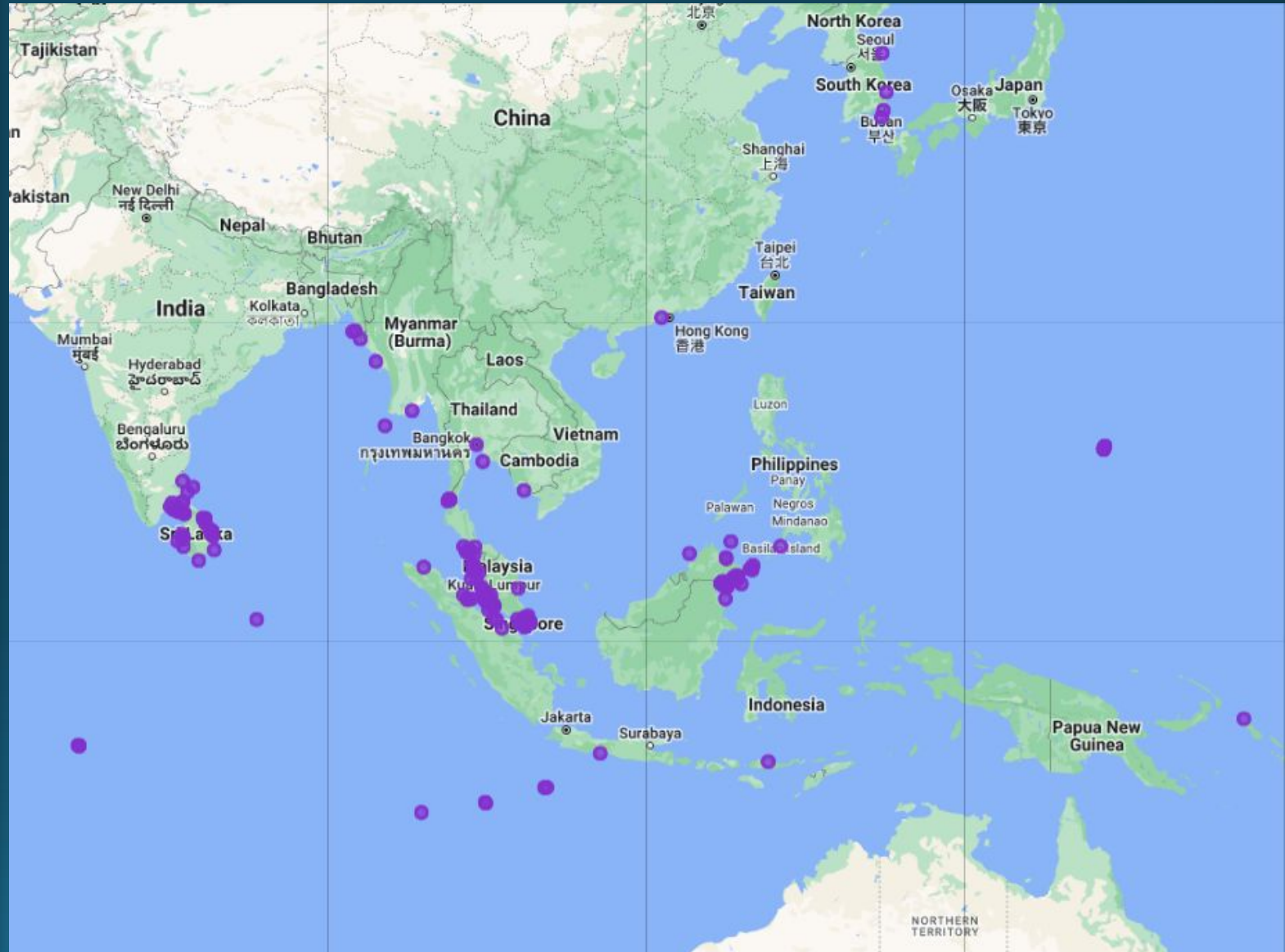
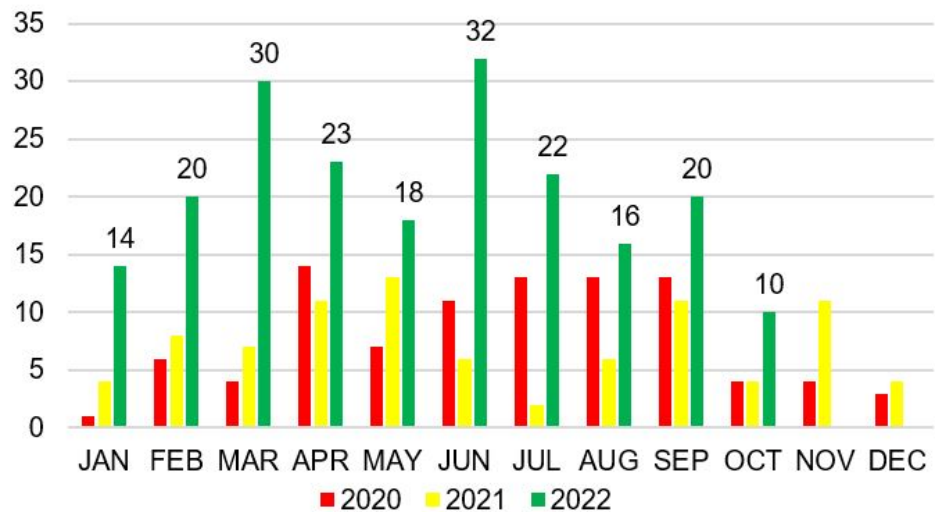
IFC urges ships to timely report all incidents for authorities to take the necessary action



Irregular Human Migration (IHM)

- 223 Incidents in 2022
- 4,660 people moved across maritime borders on 226 vessels

Number of Incidents (2020-2022)



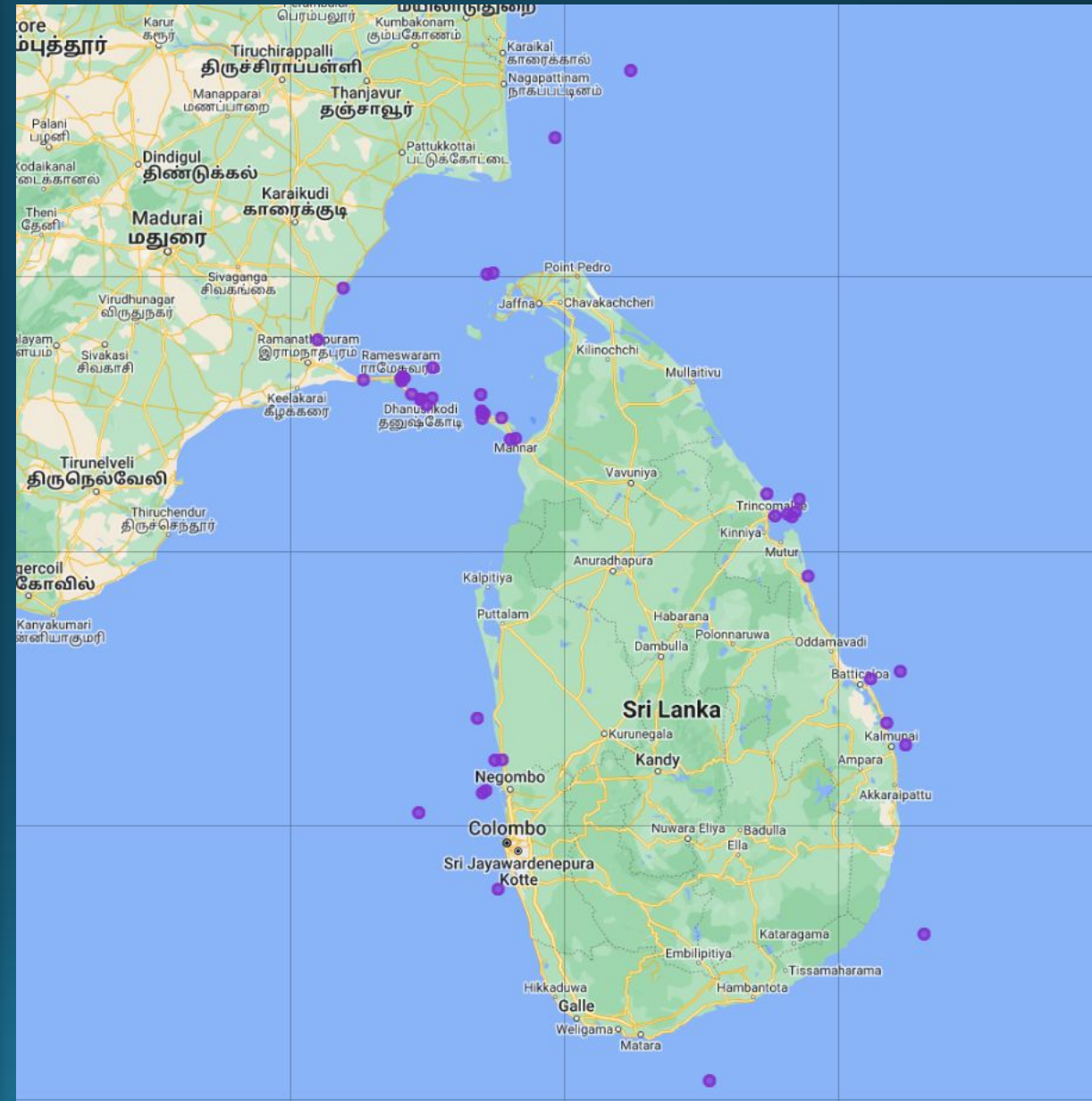
Continuing Trends

- Largest recorded flow continues to be from Indonesia to Malaysia
- Security situation continues to deteriorate in Myanmar, leading to increase flows of people across borders.
- 13 Human Smuggling incidents with Rohingya, total of 913 people.
- 16 Human Smuggling incidents involving Myanmar Nationals, 152 people.



Emerging Challenges – Sri Lanka

- Emerged in March
- Driven by economic instability
- Targeting Southern India, Réunion and Australia
- 1,431 migrants in 63 vessels
- Change to larger vessels in May.
- Number of incidents is decreasing



Emerging Route

- Northern Marianas Islands to Guam
 - Small groups of Chinese nationals – 23 in total
 - Likely economic drivers
- *The conditions exist for large numbers of people to attempt migration using maritime routes throughout the region.*
 - State-on-state conflict, civil war, communal violence, extreme weather events, economic insecurity or pandemics

The IFC advises all shippers to report any sighting of vessels with unusually high numbers of personnel on board to local authorities and to be informed of Irregular Human Migration updates through IFC Reports and have an awareness of Voluntary Community Reporting messages, which may contain IHM reporting.

The background is an underwater scene. Sunlight rays (crepuscular rays) are visible, entering from the top and fanning out across the frame. The water is a deep blue, with lighter, shimmering patches where the light hits the surface and the bottom. The overall effect is serene and ethereal.

THANK YOU